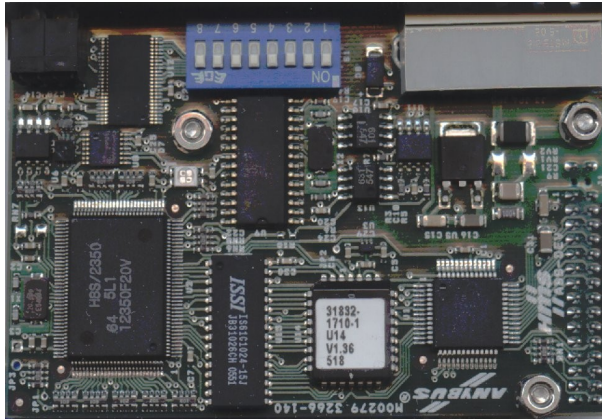


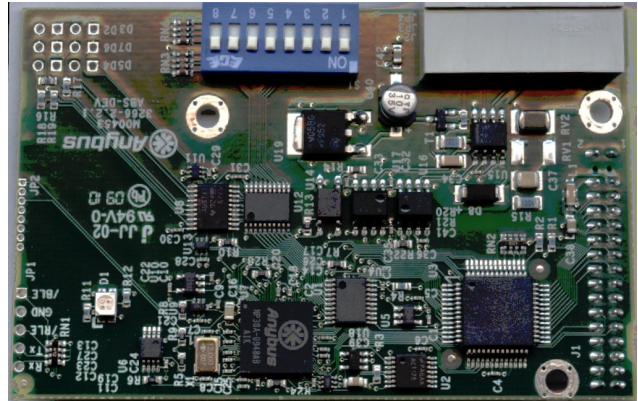
Please inspect the hardware to determ the correct eds-files to be used

### PR1721/04 Rel 1.3



Files to be used:  
**sag\_5510.eds**  
**sag\_5610.eds**  
**gwt\_1720.eds**

### PR1721/04 Rel 2.4



Files to be used:  
**sag\_5510-R2\_4.eds**  
**sag\_5610-R2\_4.eds**  
**gwt\_1720-R2\_4.eds**